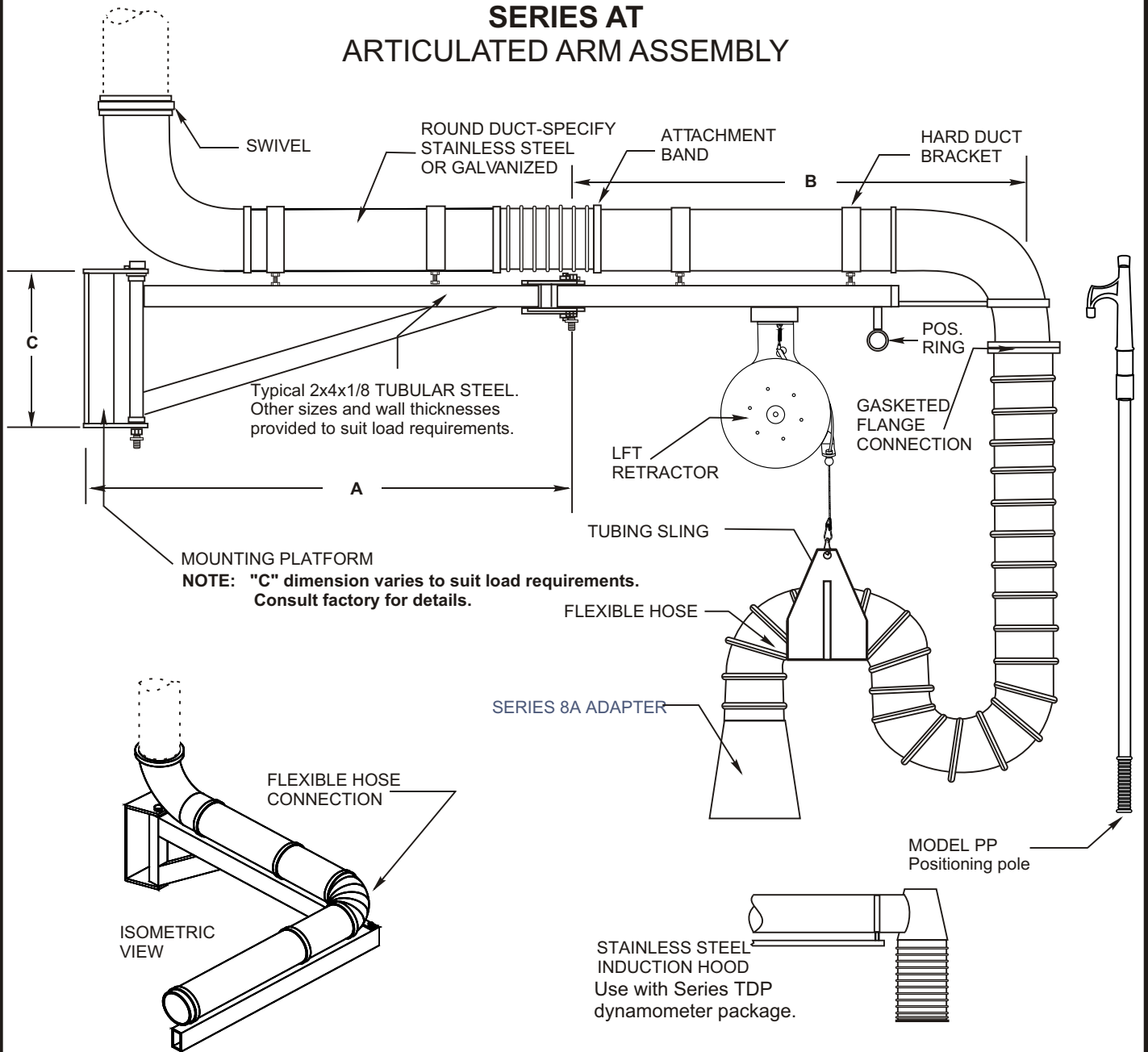


SERIES AT ARTICULATED ARM ASSEMBLY



SPECIFICATION:

The articulated arm assembly shall be Model AT, constructed of minimum 2 x 4 x 1/8" tubular steel or larger to suit load requirements with a welded mounting base constructed of structural steel, minimum 2 x 2 x 1/8 square tube and 2 x 3 x 3/16 angle with load bearings. The duct assembly shall consist of a swivel, elbow, and round duct of either galvanized or stainless construction, diameter to be specified. Hose used on swivel joints as well as hose drop assemblies shall be to suit application.

Optional accessories shall include LFT Retractor, positioning pole, and custom configured hood assemblies. Articulated arm assemblies shall be Series AT as manufactured by Car-Mon Products, Inc. of Elgin, Illinois.

Note: Factory reserves the right to change dimensional data without notice.

QTY.	A	B	C	DUCT DIA.	DUCT TYPE		HOSE TYPE	ADAPTER TYPE	BALANCER		PP POLE	OTHER
					SS	GA			LFT 15	LFT 25		