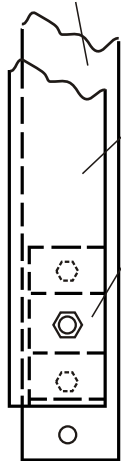


VIBRATION RAILS

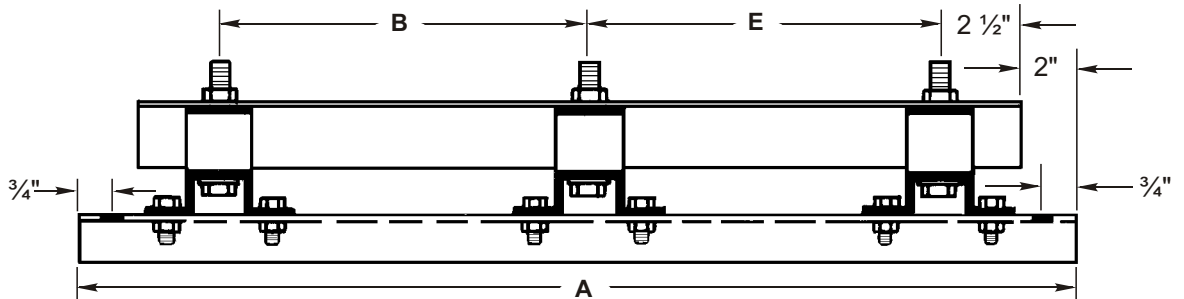
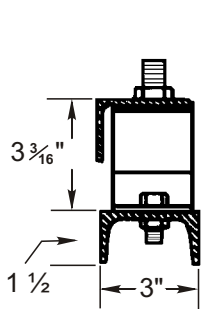
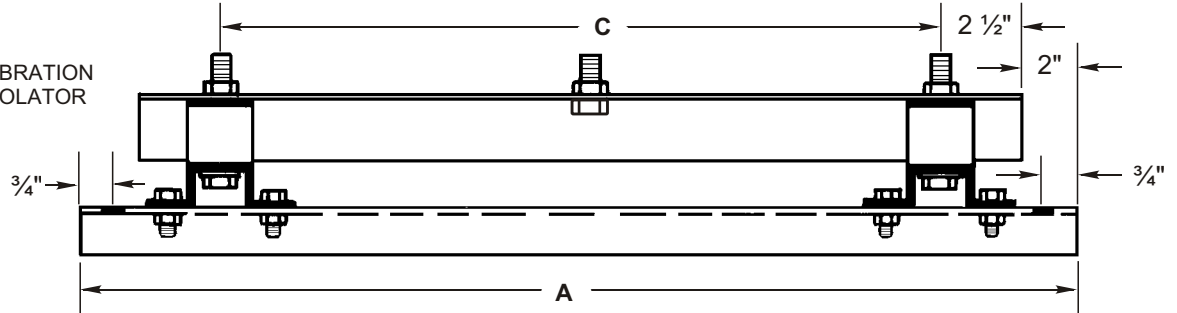
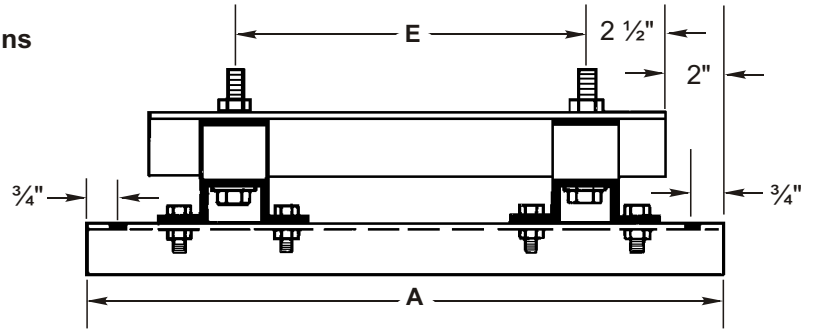
For Platform or Roof-Mounted Applications

3" x 4.1 LB.
STRUCTURAL CHANNEL



UNEQUAL LEG CHANNEL
3" x 2" x 3/16"

VIBRATION
ISOLATOR



NOTE: VIBRATION RAILS ARE ALSO AVAILABLE FOR CMSL AND CMD SERIES FANS

Qty.	Fan Size	Dimensions				No. of Pads Per Rail
		A	B	C	E	
	CMB-8 or 8F	20			10 3/4	2
	CMB-10 or 10F	20			10 3/4	2
	CMB-14 or 14F	33		23 3/8		2
	CMB-20 or 20F	33		24 1/4		2
	CMB-25 or 25F	35		25 5/8		2
	CMB-30 or 30F	38	17 1/4		11	3
	CMB-32 or 32F	39	19 1/8		11	3
	CMB-35 or 35F	49	21 7/8		18	3
	CMB-40 or 40F	52 5/8	25 3/8		18 1/2	3
	CMB-50 or 50F	55 1/8	27 5/8		18 1/2	3

Notes:

Car-Mon Vibration Isolation Rails are designed for attachment to platform or roof. The exhaust fan mounts directly to the bolts of the isolator on the rails. One pair of isolation rails installed parallel to the direction of the fan shaft are required for each exhaust fan.

The vibration isolation rail alone is not suitable for suspension applications. See submittal sheet 96-F8 for Ceiling Suspension or Wall Mounting Platforms.

See submittal sheet 05-F6 for Car-Mon Vibration Isolator detail.