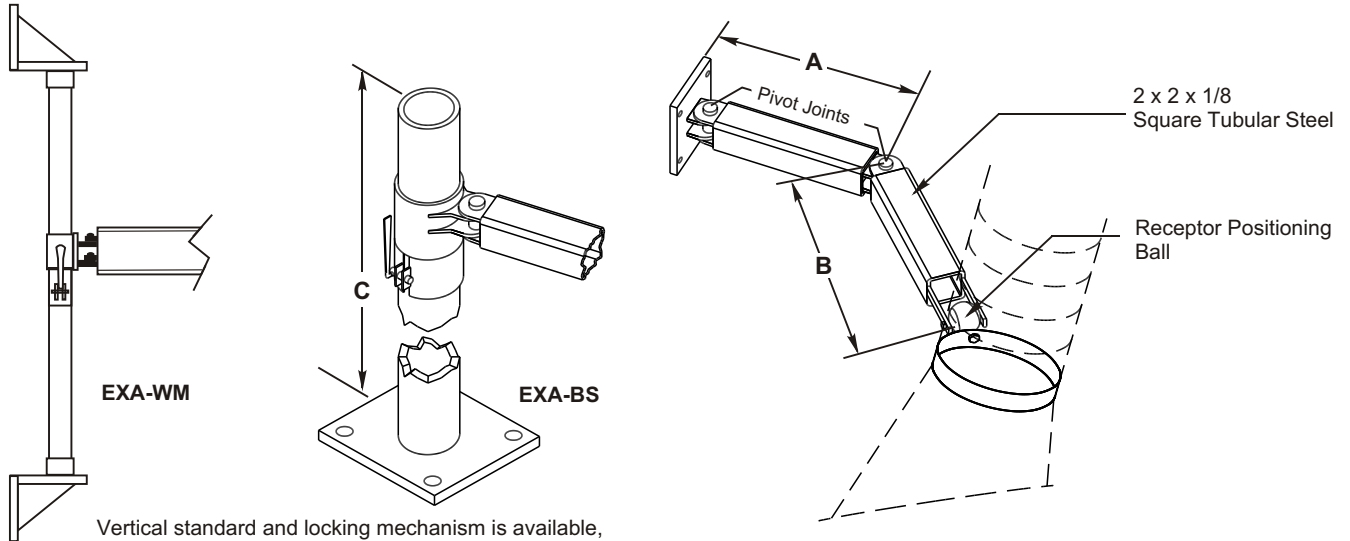


SERIES EXA ERGONOMIC POSITIONING ARM

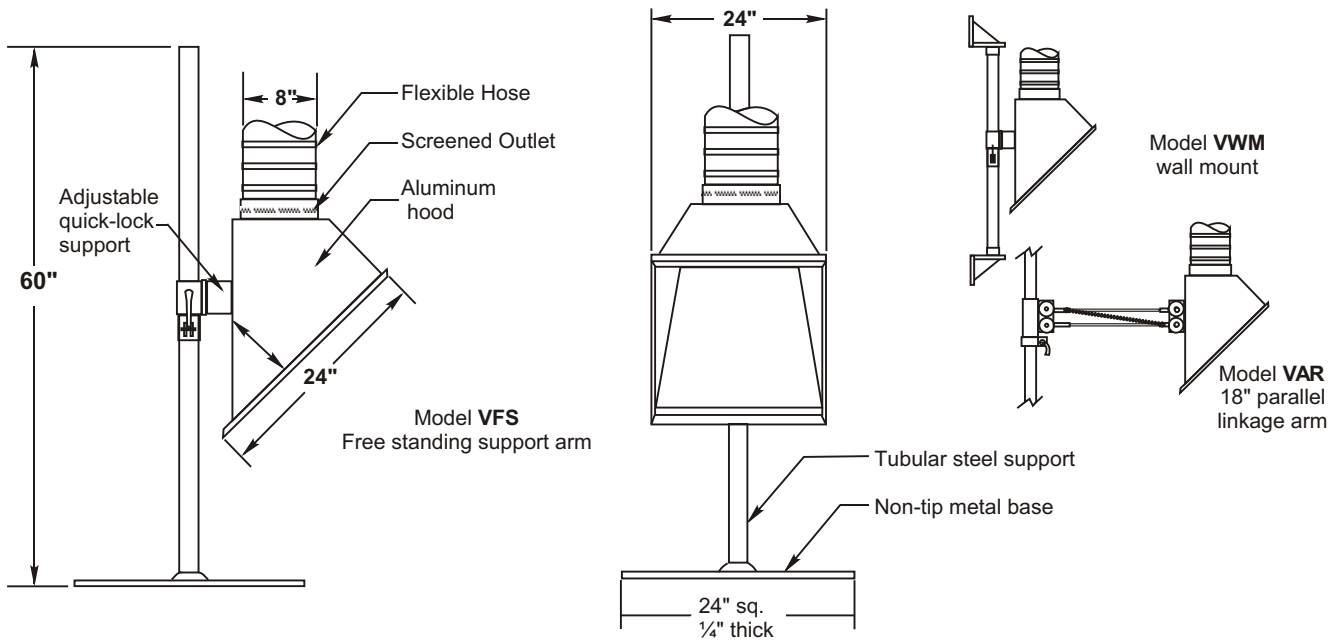


Vertical standard and locking mechanism is available, Model **EXA-BS** may be mounted to floor, table, or overhead structure, Model **EXA-WM** is for wall mount.

QTY.	HOSE			A	B	C	HOOD TYPE	EXA BS	EXA WM
	TYPE	DIA.	LENGTH						

Series EXA ergonomic arms shall be of all welded construction utilizing 2 x 2 x 1/8" mechanical square tubing, with 3/8" thick mounting plate, pivot joints with pin shaft, positioning ball and socket. Hood and hose to be attached to receptor positioning ball at end of arm. Typical hood will be Series M fume receptor, typical hose will be Type PT. Arm shall be of the length specified. Optional vertical standard shall be constructed of 2" diameter steel tubing welded to base plate or wall mounting brackets with vertical adjustment to be made by locking lever.

SERIES VH FUME RECEPTACLE



QTY.	TUBING		VAR	VFS	VWM
	LENGTH	TYPE			

Model VH Fume Receptacle shall be of aluminum construction. The inlet opening is 24" x 24" and the outlet opening is 8" diameter with a debris screen. Mounting options include Model **VFS** free standing adjustable base, Model **VWM** wall mount or Model **VAR** 18" parallel linkage arm.

Note: Factory reserves the right to change dimensional data without notice.