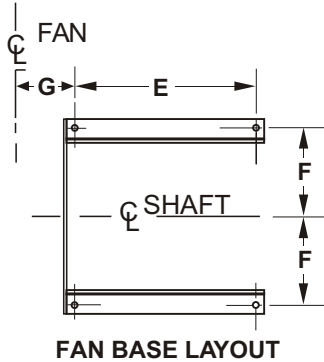
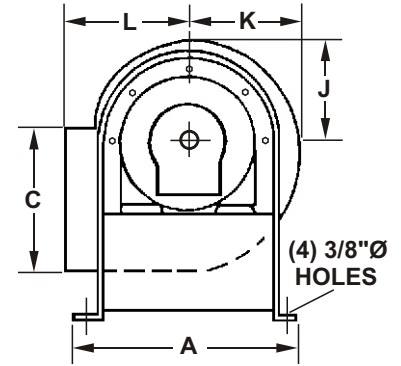
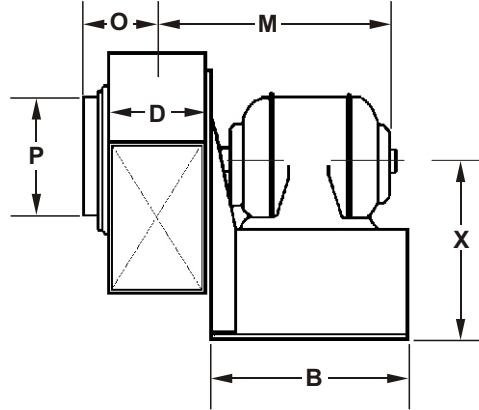


CAR-MON SERIES CMD DIRECT DRIVE EXHAUST FANS

Clockwise rotation wheels and bottom horizontal discharge housing are standard. If specified at time of order, any rotation or discharge to any of 8 different directions may be furnished. All CAR-MON fans are equipped with high efficiency non-overloading backward inclined wheels (except CMD-5) to provide proper and economical operation. In addition, all parts in the airstream, as well as the fan exterior, are coated with a phenolic resin to prevent acid corrosion and contribute to the long life of the equipment.



Note: Fan illustrated is clockwise, bottom horizontal configuration



BLOWER DIMENSIONS IN INCHES

	A	B	C	D	E	F	G	J	K	L	M	O	P	X	WT.
CMD-5	9 5/8	8	7 1/2	4 1/4	6	4 5/16	3 3/16	4 3/4	5 1/2	5 1/2	10 1/8	3 1/8	6	8 1/8	30
CMD-7	12 5/8	11	10	6 1/2	9	5 13/16	4 3/8	7 1/8	8 1/2	7	13 3/8	4 5/8	8	10 1/2	45
CMD-9	12 5/8	11	10	6 1/2	9	5 13/16	4 3/8	7 1/8	8 1/2	7	13 3/8	4 5/8	8	10 1/2	55
CMD-11	12 5/8	11	11 1/2	8	9	5 13/16	5 1/8	7 5/8	9	8	13 3/8	6 1/8	8	12 5/8	60
CMD-13	15 7/8	11	12	6 1/2	9	7 7/16	4 3/8	8	9 3/4	8 1/2	13 3/8	4 7/16	9	12	100

CHECK OPTIONAL EQUIPMENT REQUIRED

- | | | | |
|--|--|---|--|
| <input type="checkbox"/> Vibration Pads | <input type="checkbox"/> Weather Cover | <input type="checkbox"/> Aluminum Wheel | <input type="checkbox"/> Fan Platform—See Drwg. 01-F8 |
| <input type="checkbox"/> Vibration Rails | <input type="checkbox"/> Back Draft Damper | <input type="checkbox"/> Expl'n. Res. Motor | <input type="checkbox"/> Inlet & Disch. Conn.—See Drwg. 86-F10 |
| <input type="checkbox"/> Other _____ | | | |

Customer _____ Job Name _____

QTY.	MODEL	HP	WHEEL DIA.	ROTATION		DISCH.	CFM				ELECTRICAL		
				CW	CCW		1 3/4"SP	2 1/2"SP	3"SP	4"SP	VOLTS	PH	Hz
	CMD-5	1/3	6 1/4"				350	325	300				
	CMD-7	1/2	9 3/16"				680	570	490				
	CMD-9	3/4	9 3/16"				850	720	600				
	CMD-11	1	10"				1300	1180	1100	900			
	CMD-13	1 1/2	10 5/8"				1590	1520	1420	1250			

SPECIFICATION: The fan shall be the standard product of a United States exhaust system manufacturer. Fan wheel shall be backward inclined, non-overloading type with single thickness blades and be statically and dynamically balanced. The mating surfaces of the inlet cone and fan housing shall be caulked prior to assembly. The inlet cone shall be assembled to the fan housing using hex head cap screws bolted to threaded inserts welded to the interior of the housing, self tapping screws are not acceptable. All surfaces of the fan and fan wheel shall be painted with an epoxy powder coating. The fan motor shall be an industrial grade foot mounted type, horsepower and electrical characteristics as specified. The fan shall be **Series CMD** as manufactured by Car-Mon Products, Elgin, IL 60123