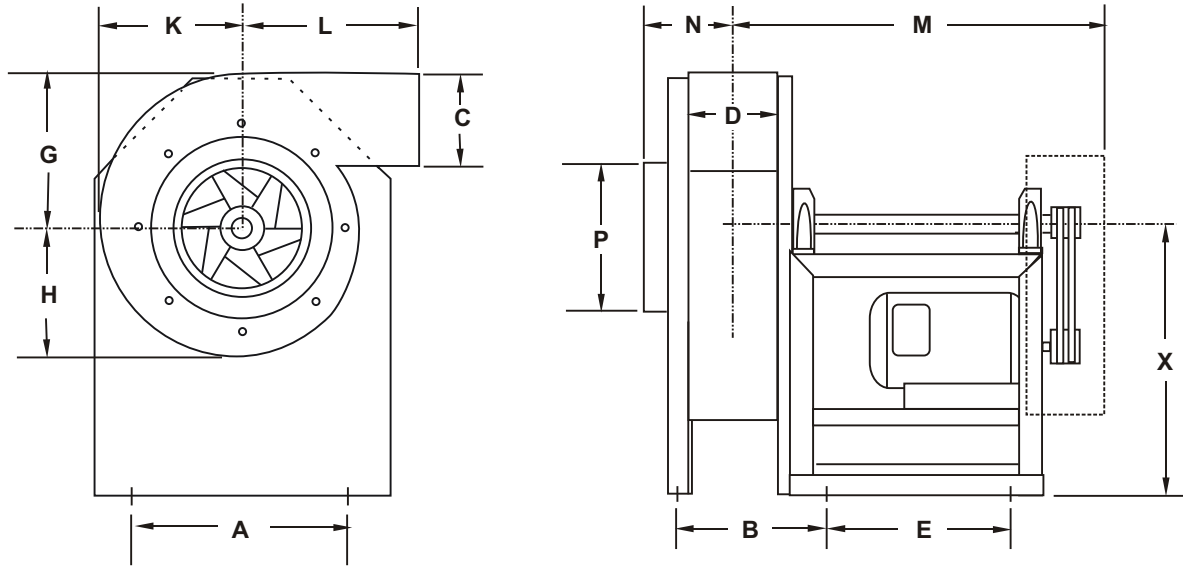


# CAR-MON SERIES BXi HIGH STATIC AIR MOVER



Model	Wheel Dia.	HP	A	B	C	D	E	G	H	K	L	M	N	P	X
BXi-12A7	12 $\frac{1}{8}$	2	18	6 $\frac{3}{4}$	6 $\frac{1}{4}$	4 $\frac{1}{2}$	11	10 $\frac{3}{8}$	8 $\frac{3}{4}$	9 $\frac{1}{2}$	12	21 $\frac{1}{6}$	4 $\frac{3}{4}$	7 $\frac{1}{4}$	18
BXi-12A0	12 $\frac{1}{8}$	3	18	8 $\frac{1}{2}$	6 $\frac{1}{4}$	6 $\frac{1}{4}$	11	10 $\frac{3}{8}$	8 $\frac{3}{4}$	9 $\frac{1}{2}$	12	22	5 $\frac{1}{2}$	7 $\frac{1}{4}$	18
BXi-15A6	15 $\frac{1}{2}$	5	18	9	8 $\frac{1}{6}$	6 $\frac{3}{4}$	11	13 $\frac{3}{8}$	11 $\frac{1}{4}$	12 $\frac{1}{4}$	12	22 $\frac{1}{4}$	5 $\frac{3}{8}$	9 $\frac{1}{4}$	18
BXi-15A0	15 $\frac{1}{2}$	7 $\frac{1}{2}$	18	10 $\frac{3}{4}$	8 $\frac{1}{6}$	8 $\frac{1}{2}$	11	13 $\frac{3}{8}$	11 $\frac{1}{4}$	12 $\frac{1}{4}$	12	23 $\frac{1}{8}$	6 $\frac{1}{4}$	9 $\frac{1}{4}$	18

**Note:** Dimensional data subject to change without notice.

**CHECK OPTIONAL EQUIPMENT REQUIRED**

- Vibration Pads     
  Weather Cover     
  Aluminum Wheel     
 Fan Platform:  Suspension or Deck Mount   
  Wall  
 Vibration Rails     
  Back Draft Damper     
  Expl'n Resistant Motor   
  Inlet & Discharge Conn.– See Drwg. 79-F10  
 Sound Attenuator

Other \_\_\_\_\_

Customer \_\_\_\_\_ Job Name \_\_\_\_\_

**Standard equipment includes:** Belt guards, turned ground and polished fan shafts, variable pitch V-belt motor drives, two groove pulleys with matched belts standard for fan size 122 and larger, adjustable motor bases, and high efficiency, air handling wheels of heavy gauge welded construction. All parts in the air stream are coated with an epoxy powder coating. Fan housings are fabricated of heavy gauge steel and are continuously welded. All fans are run tested at the factory and checked for compliance with out rigid balance standards. Clockwise rotation wheels and bottom horizontal discharge are standard. Either rotation and any one of 8 different discharge positions may be specified at time of order.

Quantity	Tag Number	Model Number	JOB REQUIREMENTS			Rotation	Discharge	ELECTRICAL		
			CFM	SP	HP			Voltage	Phase	Hz

**CAR-MON PRODUCTS, INC.**

1225 Davis Road, Elgin, IL 60123 847/695-9000  
 www.car-mon.com e-mail: info@car-mon.com

**01-F1**